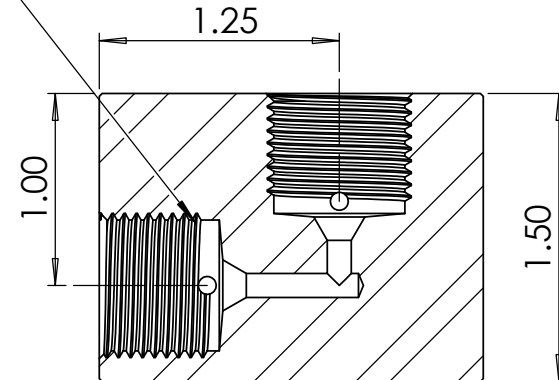


3/8" High Pressure Female  
3/4"-16UN Thread x 2



**SECTION A-A**

REVISION NOTES AND DATES

UNLESS OTHERWISE SPECIFIED:

ALL DIMENSIONS ARE IN INCHES  
TOLERANCES AS FOLLOWS:  
1 PLACE DECIMAL (.0): ±.030  
2 PLACE DECIMAL (.00): ±.020  
3 PLACE DECIMAL (.000): ±.010  
ANGLES: ±2°

SURFACE FINISH: 63RMS  
BREAK ALL EDGES: .010-.015  
FILLETS & ROUINDS: R.015 - 0.30

THREADS UNIFIED CLASS 2A - 2B  
CHAMFER THREADS 45° TO ROOT  
30° CHAMFER IS OPTIONAL  
FOR MALE THREADS ONLY

	NAME	DATE
DRAWN	MH	09/17/2024
CHECKED	KH	09/17/2024
DATE STARTED IN PRODUCTION:		
09/17/2024		



**ULTRA PRESSURE COMPONENTS  
HOUSTON, TX**

TITLE:  
3/8" High Pressure Female Elbow  
60,000 psi

SIZE <b>A</b>	DWG. NO. 5504-6H	REV <b>Y</b>
SCALE: 1:1	WEIGHT: 0.65	SHEET 1 OF 1

**PROPRIETARY AND CONFIDENTIAL**

THE INFORMATION CONTAINED IN THIS DRAWING IS THE SOLE PROPERTY OF ULTRA PRESSURE COMPONENTS. ANY REPRODUCTION IN PART OR AS A WHOLE WITHOUT THE WRITTEN PERMISSION OF ULTRA PRESSURE COMPONENTS IS PROHIBITED.